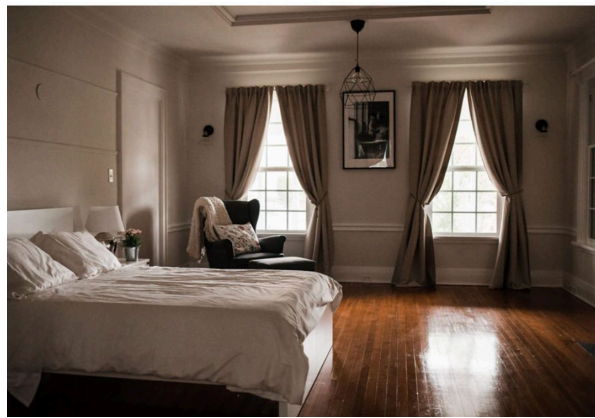




Maternity Tree INC. BC1237603
#1-46013 Gore Avenue, Chilliwack,
British Columbia, V2P 4V9
Tel: Call Ph: 604-793-6374 Clinic: (604) 392-5911
Fax: (604) 608-3923



APRIL 4th, 2020

RE: Maternity Tree Pregnancy Care Centre - LOCUM WANTED 1st September 2020 - September 1st 2021 with the possibility of staying.

Maternity Tree is a practice established in Chilliwack, BC. The Birth House is part of the clinic and provides further out of hospital birth options, We provide birth support at Chilliwack Hospital, Abbotsford Hospital, Home or Birth House. We cover Chilliwack, Hope, Agassiz, Harrison Hot Springs, Abbotsford and Mission.

Maternity Tree is seeking someone to work as a team of Two Registered Midwives with On-call and clinic responsibilities being shared equally. The required locus position and schedule allows for regular blocks of time off. Maternity Tree enjoys a high rate of repeat clients.

The clinic is located in central Chilliwack 3 mins from Chilliwack General Hospital in a beautiful heritage manor home.

We use electronic charting and have a dedicated call phone for business use.

For more information please visit our web site www.maternitytree.ca

Please contact Natasha via info@maternitytree.ca with any questions, to discuss locus requirements further and to send resume.

