



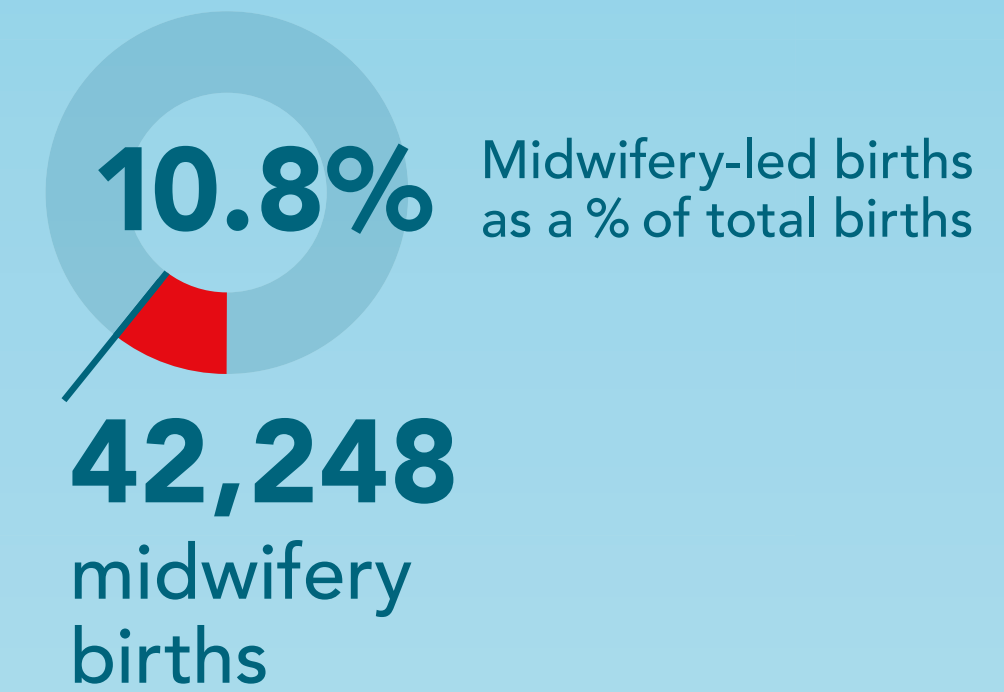
CAM ACSF 2017

Midwives and Midwifery-led Births

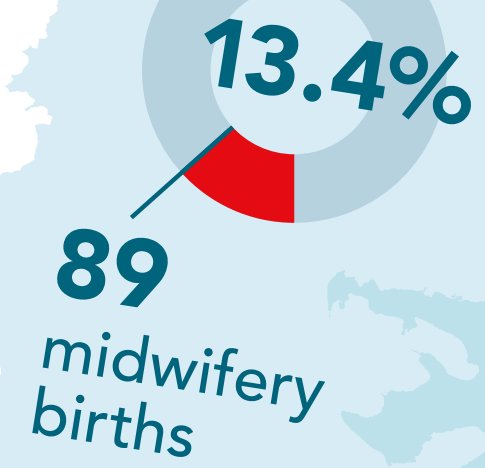
Canada
1,690
midwives

TOTAL BIRTHS 2016/2017

YT.....	401
NT.....	666
NU.....	933
BC.....	44,764
AB.....	57,394
SK.....	15,750
MB.....	17,641
ON.....	146,659
QC.....	84,700
NB.....	6,678
PE.....	1,448
NS.....	8,467
NL.....	4,411
CANADA:	389,912

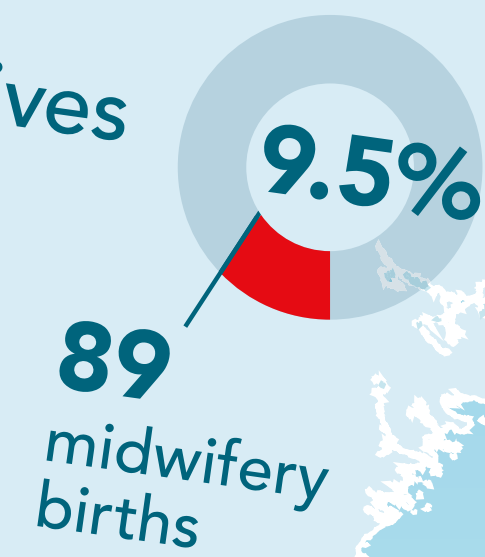


Yukon
0
midwives



Northwest Territories
5
midwives

Nunavut
5
midwives



British Columbia
361
midwives



10,027
midwifery births

Alberta
115
midwives



3,174
midwifery births

15
midwives

Saskatchewan



448
midwifery births

Manitoba
82
midwives



1,130
midwifery births

23,465
midwifery births

Ontario
877
midwives



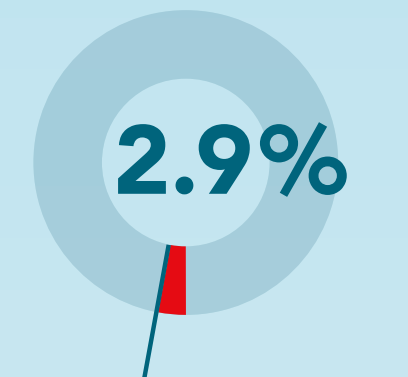
3,574
midwifery births

Quebec
217
midwives



Newfoundland & Labrador
1
midwife

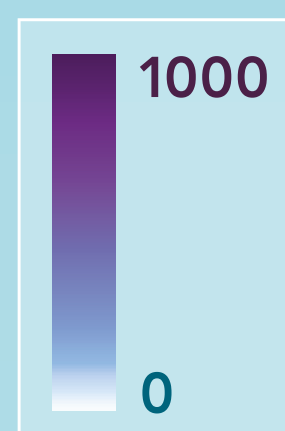
Nova Scotia
9
midwives



250
midwifery births

P.E.I.
0
midwives

New Brunswick
3
midwives



Data on total births from Statistics Canada for the period July 1, 2016 to June 30, 2017. Data on midwifery-led births and number of midwives is from the same time period if available, and if not, from as similar a time period as possible.

For all questions, please contact admin@canadianmidwives.org